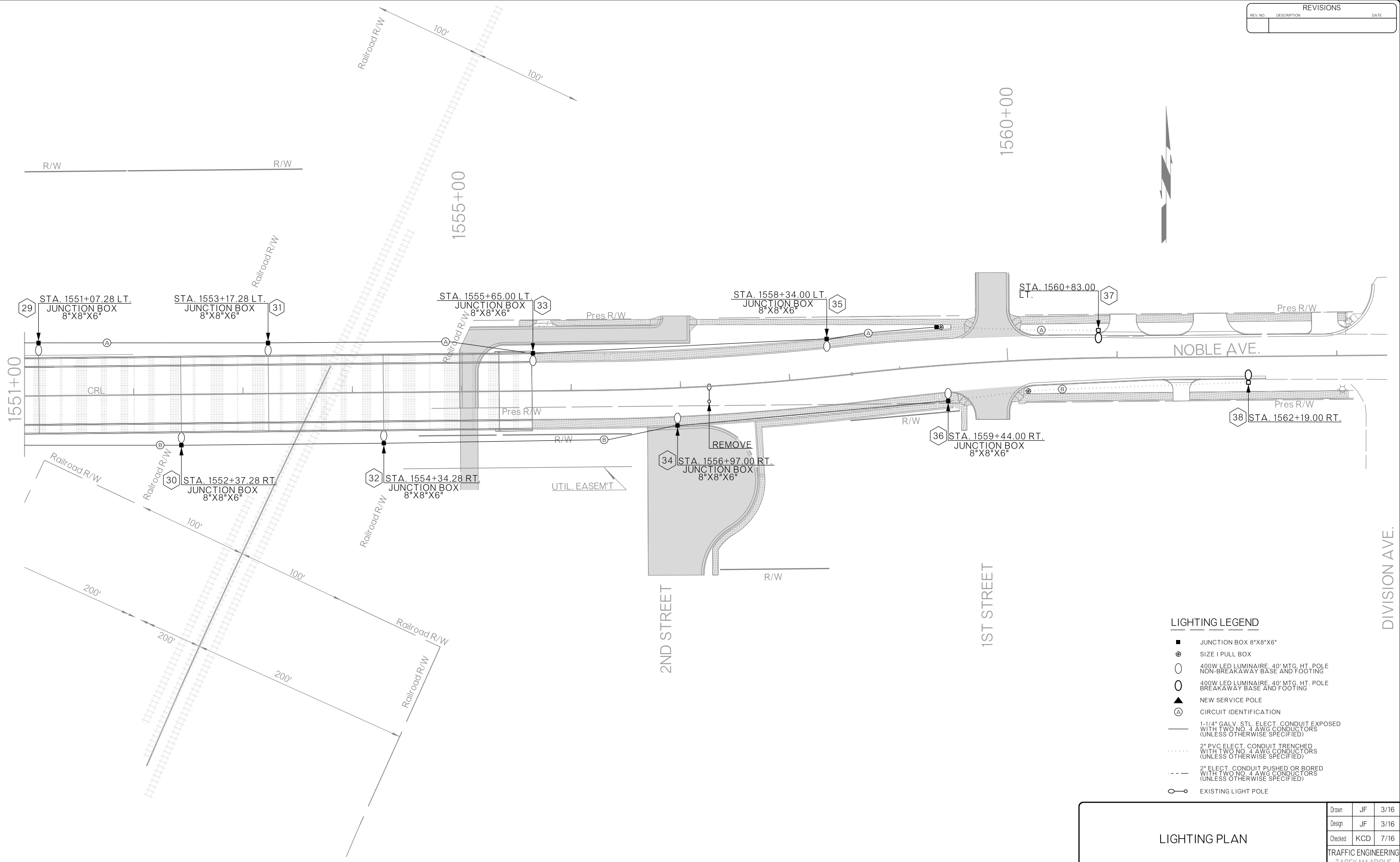


REVISIONS		
REV. NO.	DESCRIPTION	DATE



- LIGHTING LEGEND**
- JUNCTION BOX 8"X8"X6"
 - ⊕ SIZE I PULL BOX
 - 400W LED LUMINAIRE, 40' MTG. HT. POLE NON-BREAKAWAY BASE AND FOOTING
 - 400W LED LUMINAIRE, 40' MTG. HT. POLE BREAKAWAY BASE AND FOOTING
 - ▲ NEW SERVICE POLE
 - Ⓐ CIRCUIT IDENTIFICATION
 - 1-1/4" GALV. STL. ELECT. CONDUIT EXPOSED WITH TWO NO. 4 AWG CONDUCTORS (UNLESS OTHERWISE SPECIFIED)
 - 2" PVC ELECT. CONDUIT TRENCHED WITH TWO NO. 4 AWG CONDUCTORS (UNLESS OTHERWISE SPECIFIED)
 - 2" ELECT. CONDUIT PUSHED OR BORED WITH TWO NO. 4 AWG CONDUCTORS (UNLESS OTHERWISE SPECIFIED)
 - EXISTING LIGHT POLE

LIGHTING PLAN	Drawn	JF	3/16
	Design	JF	3/16
	Checked	KCD	7/16
	TRAFFIC ENGINEERING TAREK MAAROUF		